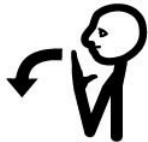


Newsletter

January 2020

reach
learning disability

Thank You to:



Friends of Reach who hosted their annual Christmas fair and raised £474. Thanks to everyone who supported the event.

Everyone who donated and supported our Big Give appeal. You helped us reach our £25,000 target!

Everyone who helped or took part in the Santa Run. You helped raise just over £1000.



Reaching Beyond Expectation



At the end of 2019 we celebrated our 20th Anniversary at Southwell Minster.

Hundreds of people filled the Minster and everyone really enjoyed watching the dance performance and listening to the singers and Media Fun Group.

Flower Pod brought along their

beautiful wreath and lit it during the service and the Faith and Light group performed their song. Lizzie from Mansfield did a nice reading.

Thank you to everyone who came along and to everyone who helped with the service or performed in the service.



Well done to everyone who completed their archery or canoeing courses funded by Sport England. Here are some of the archery group with their certificates. Thank you to YMCA Notts tutor Gavin.



Henry and James have been busy helping at Reach Cafe. They have been baking and learning about the importance of cleanliness in the Cafe. Their Lemon Drizzle cake sold out!

Come and visit the Cafe on Balderton Playing Field.



Reach Mansfield's Monday Motivation session have been learning relaxation techniques and also focusing on healthy body and healthy mind, the session is a great start to the week.

Team Update



Welcome to Christine Daniels who has started working as a tutor at Reach Newark, Reach Cafe and Reach Mansfield.

Welcome to two new Trustees - Paul Evans and Dr Brad Poulson.

Good bye to Georgia at Reach Southwell. She will be missed.

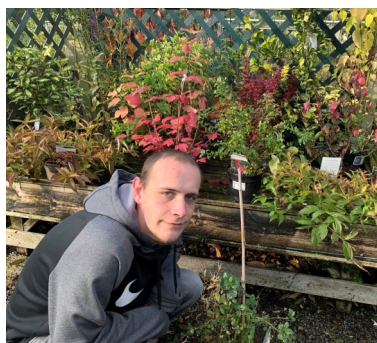


Flower Pod was very busy before Christmas. They made wreaths and other gifts for sale, hosted workshops and attended craft fairs. Here are some of the beautiful wreaths they made.



Reach Newark celebrated Christmas with party games, Christmas lunch, carols and a visit from Santa.

Tom has been on placement at Southwell Garden Centre developing skills he has learnt at Flower Pod and learning new ways to display and prepare plants.



Dates for Your diary



Reach Cafe in Balderton hold board Game afternoons on Fridays from 1.30pm, open to everyone. Please note that no support is provided for this.

Term dates

Last day of term is 9th April

The first day of term is 20th April

Reach Cafe on Balderton Playing Field is now open!



Monday to Friday 9am - 3pm,
Weekends 9am - 3pm.

(closed Sunday in January)
Serving hot drinks, light lunches, cakes, and lots more.



Follow us on Facebook
@reachcafebalderton

To stay in touch about Reach fundraising events see
www.reachuk.org

Contacts and Useful Information

Reach Southwell Prebend Passage, Southwell, Nottinghamshire, NG25 0JH **Tel 01636 819066**

Reach Newark Hawtonville Community Centre, St Marys Gardens, Newark NG24 4JQ **Tel 01636 671939**

Reach Mansfield St John's Centre, St John Street, Mansfield, NG18 1QH **Tel 01623 232748**

Flower Pod Brackenhurst Lane, Southwell, NG25 0QL **Tel 01636 918271**

Reach Care Hawtonville Community Centre, St Marys Gardens, Newark NG24 4JQ **Tel 01636 919946**

Reach Cafe Balderton Playing Field, Coronation Street, Balderton NG24 3BD **Tel 01636 702624**

Visit our website for more event information, www.reachuk.org. Keep up to date by liking our Facebook page.

